

Installation instruction do88 performance Intercooler kit SAAB 900 Turbo 1981-1993

Part number: BIG-170



This instruction shows how to replace the OEM intercooler with do88 performance intercooler kit.

At this type of installation we always recommend that you have mechanical experience and knowledge about safety during work on vehicles.

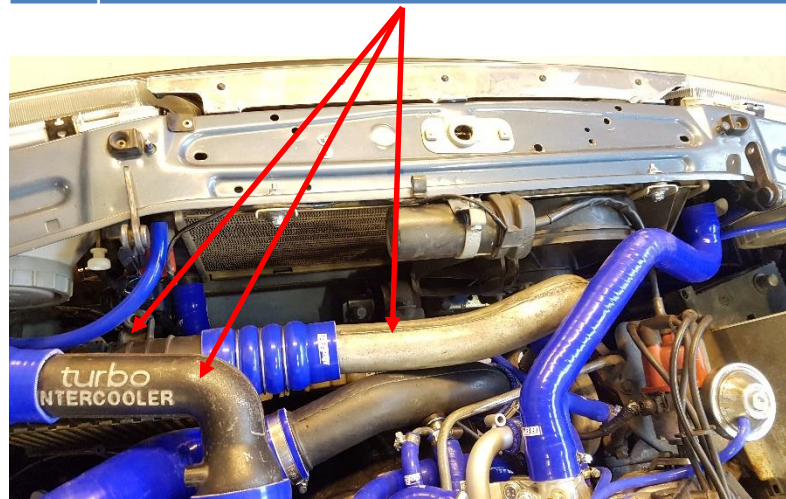
Parts included:

1. Performance intercooler
2. Turbo outlet silicone hose
3. Intercooler pipe Turbo -> Intercooler
4. Intercooler inlet silicone hose
5. Intercooler outlet silicone hose
6. Intercooler pipe Intercooler -> Throttle body
7. Throttle body silicone hose
8. Towing eye
9. Lower intercooler brackets
10. AC condenser brackets (only MY 1987-1993)
11. Screws nuts and washers:
 - 2pcs M8x45 pin screws
 - 2pcs M8 nuts
 - 2pcs M8 Nylon lock nuts
 - 4pcs M8 Washers
 - 4pcs Rubber washers
 - 2pcs M6 Screws
 - 3pcs M8x20 Screws
 - 2pcs M5x12 Screws (only MY 1987-1993)
 - 2pcs M5x20 Screws (only MY 1987-1993)
 - 6pcs M5 Washers (only MY 1987-1993)
 - 2pcs M5 Nuts (only MY 1987-1993)

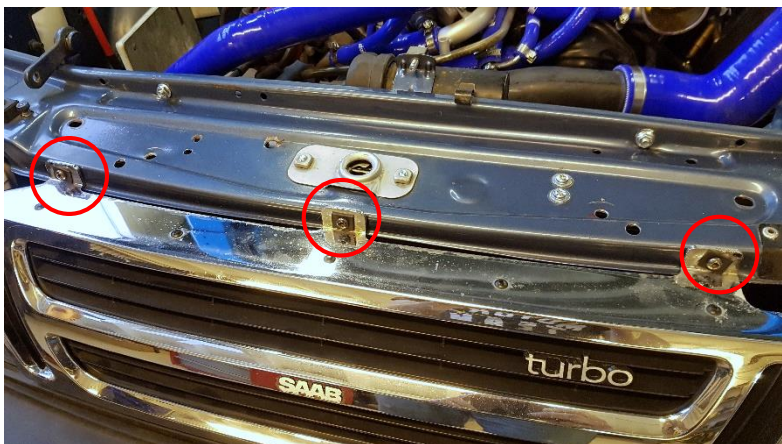
1. Remove the hood (it will make work much easier). 2x Hex 13mm and the hose to the wind shield washers then pull hood forward to remove from car (make sure to be 2 persons).



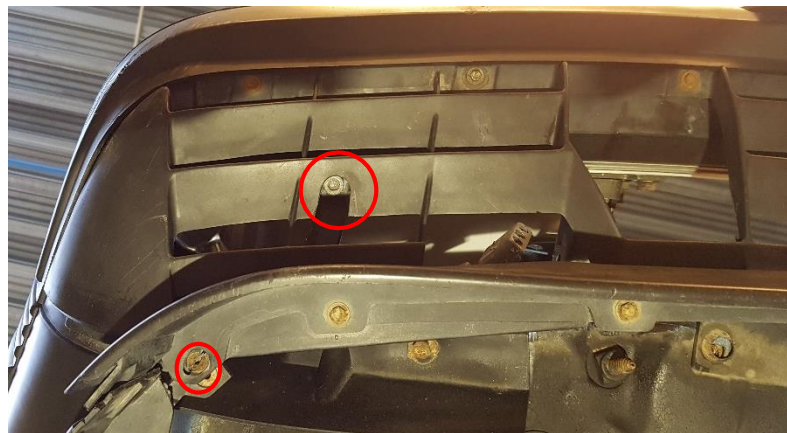
2. Remove the OEM hoses, pipes, intercooler, intercooler bottom bracket and 2 air guides.



3. Remove the grille, 3pcs Torx T25. Gently pull the grille straight up.



4. Remove the bumper. 2pcs 8mm Allen key and 2pcs Hex 8mm. Gently pull the bumper straight forward.

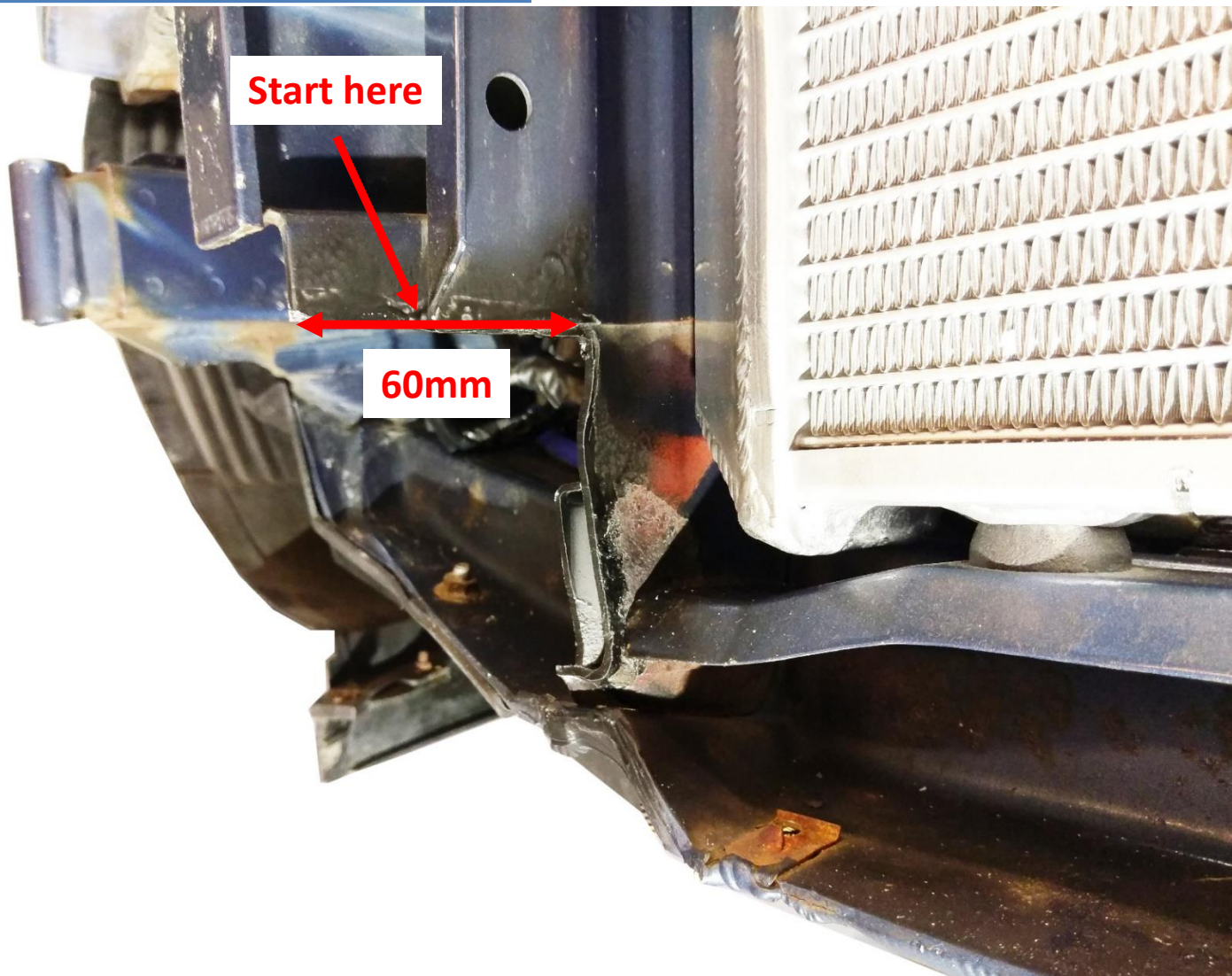


5.

Remove and discard both motors for the head light wipers as those cannot be installed with the do88 performance intercooler.
Seal / block off the hoses for the head light washers.

6.

Cut and remove both towing eyes according to picture.
Protect the cut area with rust protecting paint.



7. 2 holes (Ø9,5mm) needs to be drilled to be able to install the intercooler. The holes needs to be drilled in different locations depending on which front you have on your car.

Model years 1981-1986 (with the flat front)

A = 196mm

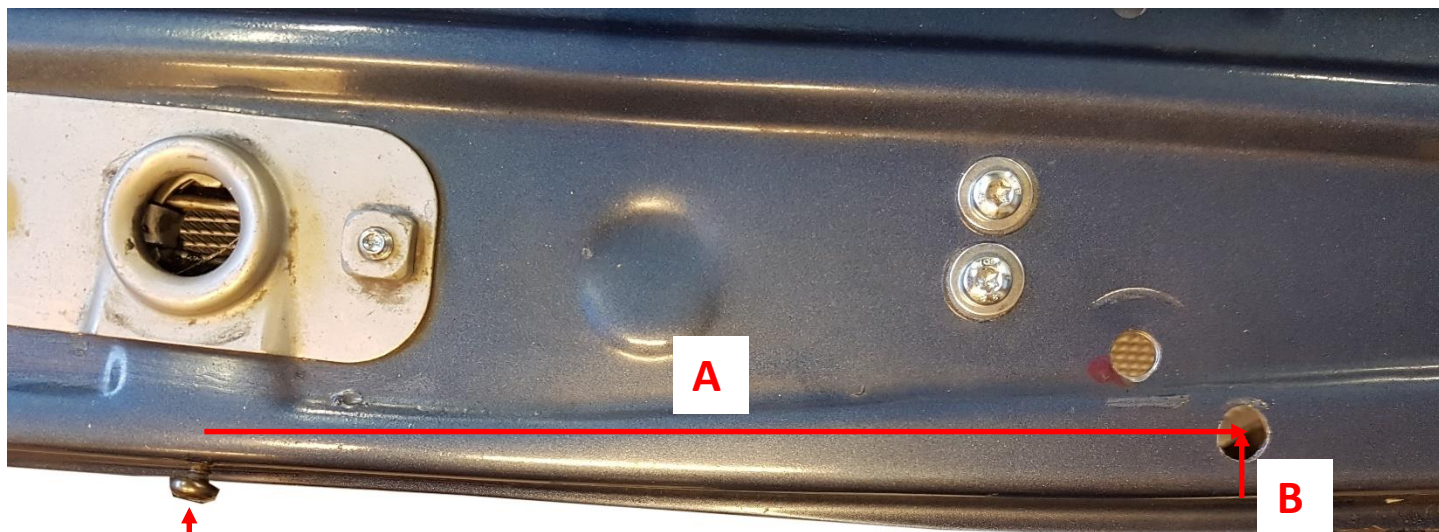
B = 40mm (Make sure to measure from the starting point of arrow B)

Model years 1987-1993 (with the new front)

A = 196mm

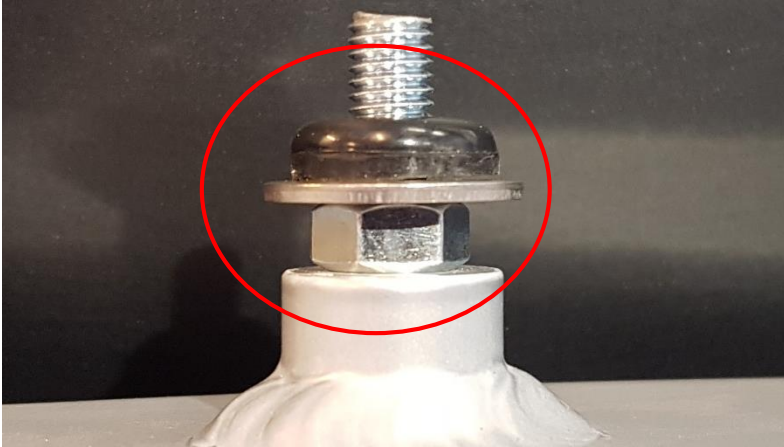
B = 12mm (Make sure to measure from the starting point of arrow B)

The measurements are the same on both left and right sides of the center grille screw.



Center grille screw

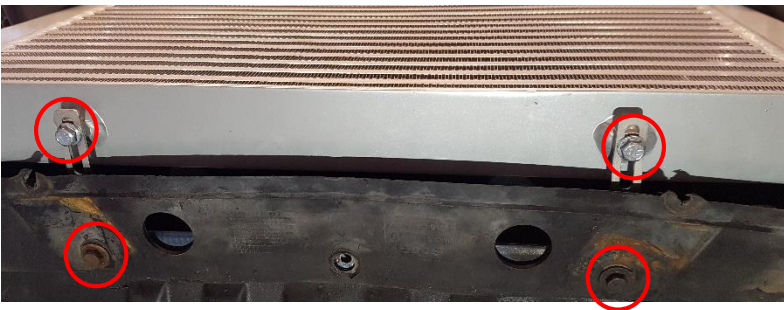
8. Install the pin screw to the bottom, tighten it with the included nut. Add washer and rubber washer on the pin screw. Do this on both sides.



9. Install the intercooler on the car, gently push the pin screw through the 2 holes you have drilled. Fasten it with the included rubber washer, normal washer and nylon nut.



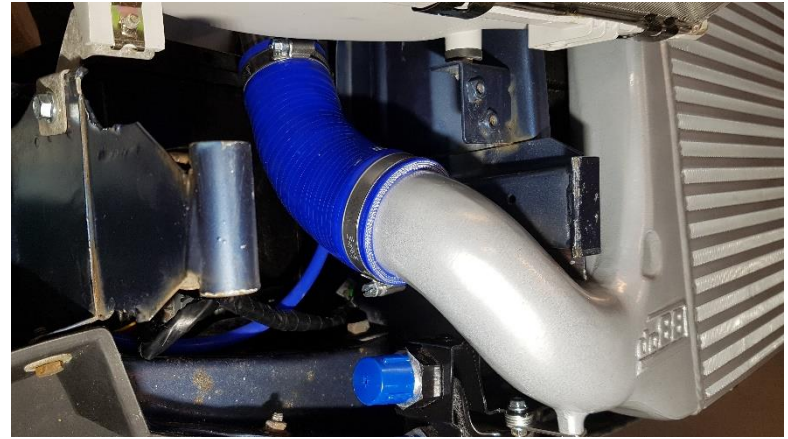
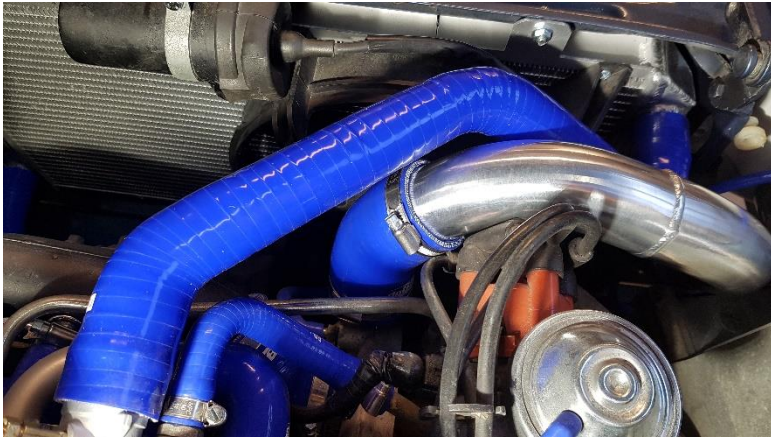
10. Install the 2 included brackets at the bottom of the intercooler with 2pcs M6x12. Fasten it to the car using the same screws as for the plastic air guide. You can adjust the position of these to get correct clearance between AC/IC/Bumper



11. On MY 1987-1993 with Air Condition, fasten the AC condenser to the intercooler with the included brackets, M5 screws, nuts and washers according to picture below. The number of washers needed and their position might vary.



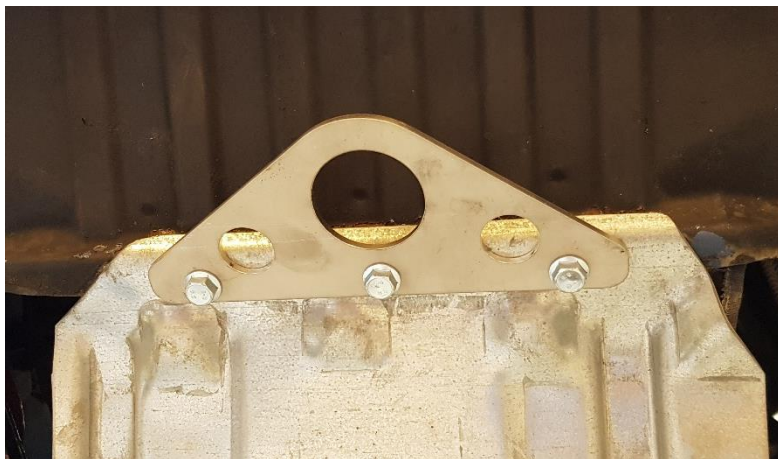
12. Install the new intercooler pipe and hoses between turbo and intercooler inlet according to photo below.



13. Install the new intercooler pipe and hoses between intercooler outlet and throttle body according to photo below.



- 14.** Install the included towing eye with the included M8x20 screws.



- 15.** Model years 1981-1986 (with the flat front)
Trim the inside of the front plastic spoiler according to picture if it interferes with the intercooler.

Model years 1987-1993 (with the new front)
Cut the lower screw end flush with the nut according to picture.



- 16.** Install all other parts in reverse order.

